

Certificate of Analysis

PRODUCT INFORMATION

Product: Hemp Derived Whole Plant Finished Concentrate
Description: 1000 MG Per 1 FL OZ (30 mL) Total CBD in Organic MCT
Hemp Source: Sawyer Farm
Cultivar: Blend
Product Batch ID: W01S1019XN0-33B01MN
Product Order ID: SF19338W33
Product Code: W33MN
Mfg Date: 5-Dec-19



PRODUCT DATA

Parameter	Test Procedure	Specification	Units	Result
Appearance (20 - 25°C)	ASTM E1627 - 11	Dark amber viscous liquid		PASS
Odor (20 - 25°C)	ASTM E1627 - 11	Floral, earthy	-	PASS
Total CBD (Potency)	C5210-LCUV (Internal)	1 FL OZ (30 mL)	MG	1046 PASS
CBDA	C5210-LCUV (Internal)	≤ 0.05	mg/mL	< 0.05 PASS
Delta 9-THC	C5210-LCUV (Internal)	≤ 0.34	%w/w	0.14 PASS
THCA-A	C5210-LCUV (Internal)	≤ 0.05	%w/w	< 0.05 PASS
Minor Cannabinoids	C6198 LCMSMS (Internal)	≥ 0.01	%w/w	TBD PASS
Terpenes	C5933-GCMS (Internal)	≥ 250	ppm	TBD PASS
Residual Solvent	C5923-GCMS (Internal)	USP 467**	ppm	PASS
Heavy Metals*	ICPMS		ppb	PASS
Pesticides*	C5838 LCMSMS (Internal)		ppb	PASS
Mycotoxins*	C5838 LCMSMS (Internal)		ppb	PASS

*Results based on source whole plant concentrate prior to distillation

**Class I & II solvents methanol, pentane, ethanol, acetone, 2-propanol, acetonitrile, n-hexane, tetrahydrofuran, chloroform, n-heptane, toluene, xylene (m,p).

***Specification limits are set based on internal process monitoring and represent expected levels depending on the type of material described in this document.

****MDH - Massachusetts Department of Health

PRODUCT STABILITY

Recommended Storage: 20-25 ° C (68-77° F), Refrigerate for long term storage (> 3 months).
Retest Date: 1-Dec-21 Avoid exposure to extreme hot or cold and protect from exposure to light.

IMPORTANT: Some data for this product are collected using NEP internal analytical testing procedures undergoing validation. Testing results will vary within reasonable procedure performance limits. Results demonstrating regulatory compliance are provided by NEP are for directional purposes in support of manufacturing processes and are not a substitute for 3rd party lab testing of this material. External testing denoted by "(External)" in procedure field is performed by MCR Labs (Framingham, MA USA); reports available upon request.

Approved by:



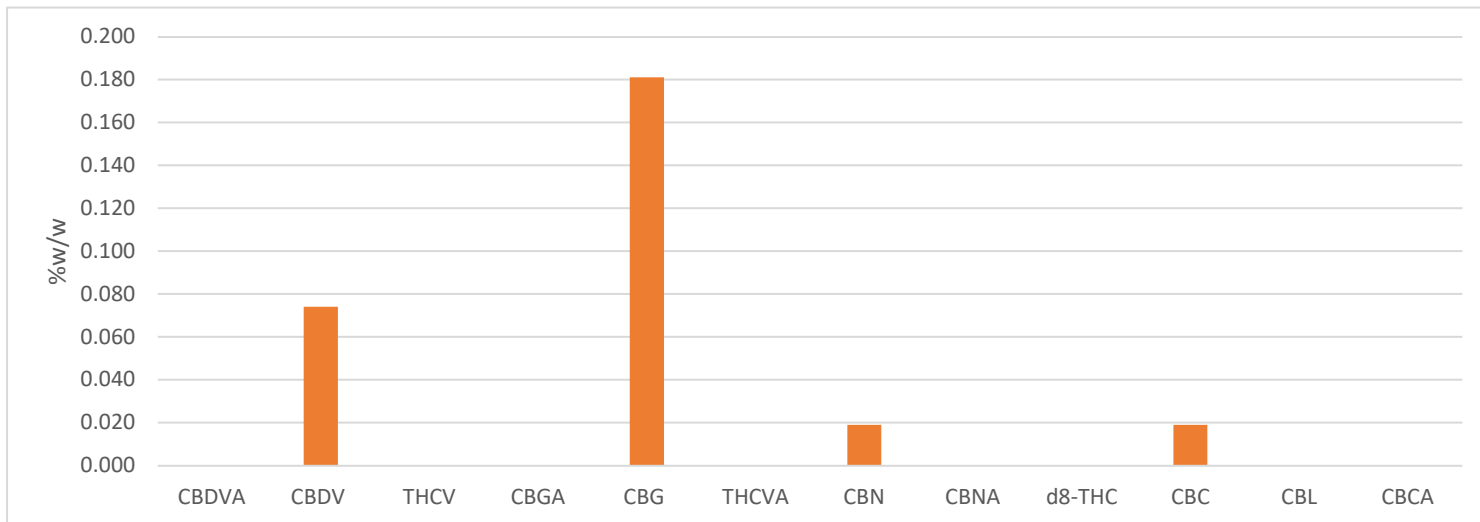
Date: 5-Dec-19
Name: Keith Griswold, M.S.
Title: Director of Analytics & Formulations

Certificate of Analysis

Minor Cannabinoids

Product: Hemp Derived Whole Plant Finished Concentrate **Product Batch ID:** W01S1019XN0-33B01MN
Procedure ID: C6198 LCMSMS (Internal)

Total Minor Cannabinoids: 0.29 %w/w



Analyte	Reporting Limit	%W/W	MG/G
Cannabidivarinic Acid (CBDVA)	0.01% w/w	< 0.01	-
Cannabidivarin (CBDV)	0.01% w/w	0.074	0.74
Tetrahydrocannabivarin (THCV)	0.01% w/w	< 0.01	-
Cannabigerolic Acid (CBGA)	0.01% w/w	< 0.01	-
Cannabigerol (CBG)	0.01% w/w	0.181	1.81
Tetrahydrocannabivarinic Acid (THCVA)	0.01% w/w	< 0.01	-
Cannabinol (CBN)	0.01% w/w	0.019	0.19
Cannabinolic Acid (CBNA)	0.01% w/w	< 0.01	-
Delta 8-THC	0.01% w/w	< 0.01	-
Cannabichromene (CBC)	0.01% w/w	0.019	0.19
Cannabicyclol (CBL)	0.01% w/w	< 0.01	-
Cannabichromic Acid (CBCA)	0.01% w/w	< 0.01	-



Certificate of Analysis

21 O'Bryan Drive
Brattleboro VT 05301
Northeastprocessing.com

Terpene Profile

Product: Hemp Derived Whole Plant Finished Concentrate
Procedure ID: C5933-GCMS (Internal)

Product Batch ID: W01S1019XN0-33B01MN

Total Terpenes: 0 ppm

Analyte	Units	Reporting Limit	Results
α-Pinene	PPM	2	
Camphene	PPM	2	
Sabinene-	PPM	2	
β-Pinene	PPM	2	
β-Myrcene	PPM	2	
.α-Phellandrene	PPM	2	
Carene	PPM	2	
α-Terpinene	PPM	2	
D-Limonene	PPM	2	
o-Cymene	PPM	2	
Eucalyptol	PPM	2	
β-Ocimene	PPM	2	
γTerpinene	PPM	2	
Terpinolene	PPM	2	
Sabinene Hydrate	PPM	2	
Fenchone	PPM	2	
Linalool	PPM	2	
Fenchol	PPM	2	
Isopulegol	PPM	2	
Camphor	PPM	2	
Isoborneol	PPM	2	
Menthol	PPM	2	
endo-Borneol	PPM	2	
α-Terpineol	PPM	2	
γ Terpineol	PPM	2	
Nerol	PPM	2	
Pulegone	PPM	2	
Geraniol	PPM	2	
Geranyl acetate	PPM	2	
α-Cedrene	PPM	2	
(E)-β-Famesene	PPM	2	
Caryophyllene	PPM	2	
α-Humulene	PPM	2	
trans-Neradiol	PPM	2	
cis-Neradiol	PPM	2	
Valencene	PPM	2	
Guaiol	PPM	2	
Caryophyllene Oxide	PPM	2	
Cedrol	PPM	2	
α-Bisabolol	PPM	2	

*BQL - Below quantitation limit; representat



Certificate of Analysis

21 O'Bryan Drive
Brattleboro VT 05301
Northeastprocessing.com

Residual Solvents

Product: Hemp Derived Whole Plant Finished Concentrate **Product Batch ID:** W01S1019XN0-33B01MN
Procedure ID: C5923-GCMS (Internal)

Analyte	Units	Reporting Limit	MRL (USP 467)	Result	Result
Methanol	ppm	25	< 3000	< 25	PASS
Pentane	ppm	25	< 5000	< 25	PASS
Ethanol	ppm	25	< 5000	509	PASS
Acetone	ppm	25	< 5000	<25	PASS
Isopropanol	ppm	25	< 5000	39	PASS
Acetonitrile	ppm	25	< 410	< 25	PASS
n-Hexane	ppm	25	< 290	< 25	PASS
Tetrahydrofuran	ppm	25	< 720	< 25	PASS
Chloroform	ppm	25	< 60	< 25	PASS
n-Heptane	ppm	25	< 5000	<25	PASS
Toluene	ppm	25	< 890	< 25	PASS
m & p Xylene	ppm	25	< 2170	< 25	PASS